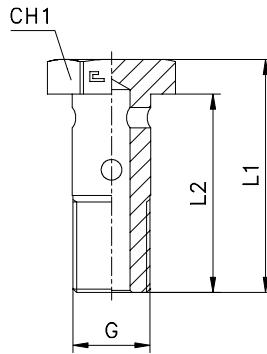


PERFORED BOLT
Thread BSP Parallel

Code: **8048..**
Type: **BFG**

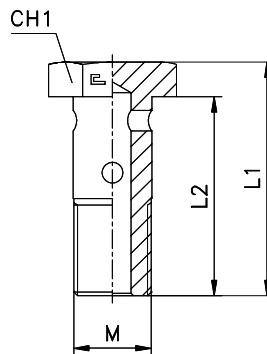


CODE	G	L1	L2	CH1
804801	1/8	26	21	14
804802	1/4	34	28	19
804803	3/8	39	32	22
804804	1/2	48	40	27
804805	5/8	52	43	30
804806	3/4	58	48	32
804807	1	69	58	41

Notes: If you wish to order a fitting in stainless steel, please change the first two digit from **80....** to **81....** .

PERFORED BOLT
Metric parallel thread

Code: **8049..**
Type: **BFM**



CODE	M	L1	L2	CH1
804901	10x1	26	21	14
804902	12x1,5	31,5	26	17
804903	14x1,5	36	30	19
804904	16x1,5	39	32	22
804905	18x1,5	44	37	24
804906	20x1,5	48	40	27
804907	22x1,5	49	41	27
804908	26x1,5	58	48	32
804909	30x1,5	65	55	36

Notes: If you wish to order a fitting in stainless steel, please change the first two digit from **80....** to **81....** .